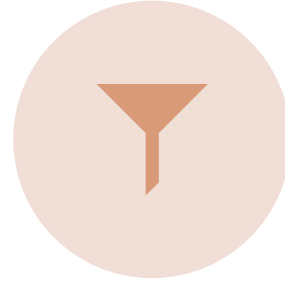




# WHAT THE WATER SETTLEMENT AGREEMENT MEANS FOR CAMP VERDE

Mayor Marie Moore

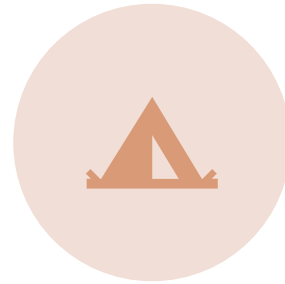
# PURPOSE OF THE AGREEMENT



RESOLVES WATER-RELATED  
DISPUTES BETWEEN THE  
YAVAPAI-APACHE NATION, THE  
UNITED STATES, AND THE  
TOWN OF CAMP VERDE



PROVIDES GREATER CERTAINTY  
REGARDING THE TOWN'S  
LONG-TERM WATER USE



ESTABLISHES RULES FOR HOW  
CAMP VERDE MAY DIVERT, USE,  
MITIGATE, ACCOUNT FOR, AND  
REPORT WATER



CREATES A FRAMEWORK FOR  
COOPERATION ON WATER,  
SEWER, RECHARGE, AND  
INFRASTRUCTURE PLANNING

# WHY THIS MATTERS TO CAMP VERDE



Reduces uncertainty tied to the Gila River Adjudication



Protects the Town's ability to continue providing municipal and industrial water service



Clarifies limits, responsibilities, and future options for water supply



Supports long-term planning for growth, infrastructure, and economic development



# CAMP VERDE'S WATER BUDGET

- The agreement allows the Town a Maximum Average Annual Diversion Amount of 7,752 acre-feet per year
- This applies to:
  - Underground water for municipal and industrial uses within the Town Water Service Area
  - Certain historic water rights
  - The budget is calculated using a 5-year rolling average

# WHAT COUNTS AGAINST THE TOWN'S WATER BUDGET?

- Groundwater diverted for municipal and industrial uses in the Town Water Service Area
- Water diverted or used from the Town's listed historic water rights
- Water diverted into impoundments if not otherwise accounted for
- Water sold, exchanged, or transferred to a third party if it otherwise would have counted against the budget



# WHAT DOES NOT COUNT AGAINST THE TOWN'S WATER BUDGET?

Effluent used by the Town within the Town Water Service Area

Historic water rights acquired after the effective date

Recovery and use of Long-Term Storage Credits

Cragin Water

CAP Water obtained through agreement

Water associated with acquisition of an existing public water system, within limits

Imported water from the Groundwater Importation Area

Water delivered to the Nation by exchange or other legal arrangement

# IF CAMP VERDE EXCEEDS ITS WATER BUDGET

The Town must mitigate any exceedance by December 31 of the following year

Mitigation options include:

- Reducing water use
- Recovering and using Long-Term Storage Credits
- Aquifer recharge
- Acquiring and temporarily following historic water rights
- Discharging effluent to the Verde River
- Discharging effluent to the Verde River subflow zone
- Other mutually agreed mitigation strategies





# FUTURE DEVELOPMENT EXPECTATIONS

The Town and Nation agree to encourage:

- Water-efficient fixtures
- Native and drought-tolerant landscaping
- Use of effluent or historic water rights for turf and non-drought-tolerant landscaping
- Neither party will provide potable water for large ornamental water features, except as allowed by law
- Town Limits and Water Service Area may expand over time and will be updated through annual reporting





## ACCOUNTING REQUIREMENTS

The Town must track and calculate water use using an agreed-upon accounting form

The 5-year rolling average determines compliance with the water budget

The agreement is structured to avoid counting the same water twice

Accounting distinguishes between:

- Water counted against the budget
- Water excluded from the budget
- Water used for mitigation



## REPORTING REQUIREMENTS

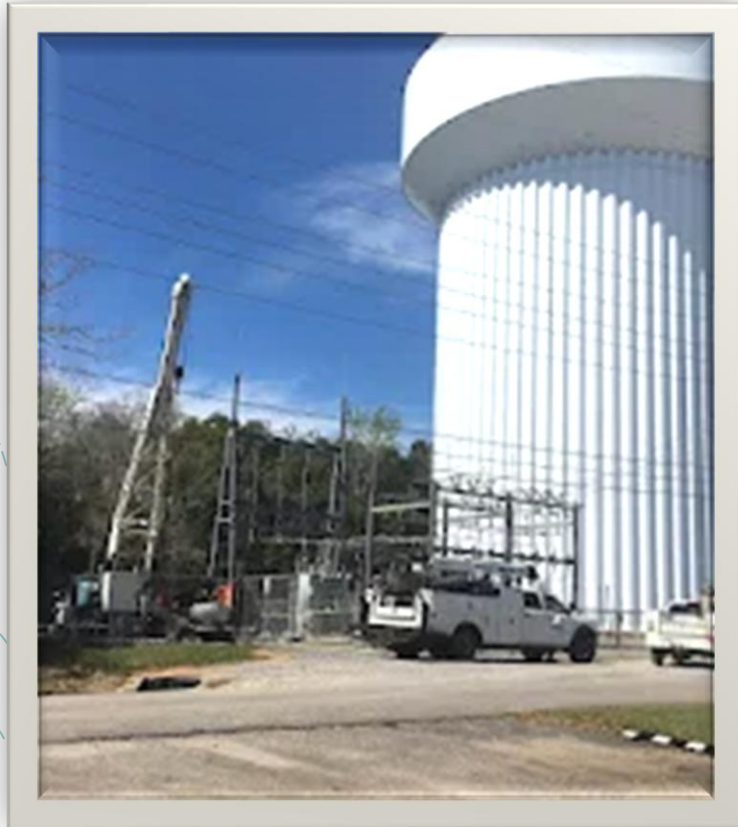
Metering must be operational by the enforceability date

Annual reports are due May 1 each year

Reports must include:

- Water diverted by source, point of diversion, and place of use
- Water counted and not counted against the budget
- Mitigation activities
- Underground storage activity
- Imported water
- Monitoring and testing results
- Updated Town Limits map
- Updated Town Water Service Area map

# WELL DEVELOPMENT



- The Nation agrees not to object to future Town wells that comply with the agreement and Well Protection Protocol
- The Town may not construct a new well within the lateral extent of the Verde River Subflow Zone
- Replacement wells are allowed, even if located in the subflow zone
- The Town must provide notice to the Nation for new or replacement wells
- If the Nation objects, the parties must meet and confer before any enforcement action

## WATER SERVICE TO THE NATION

The Town will continue providing potable water service to the Nation in the Camp Verde and Middle Verde Districts

Additional service may be provided under the Interconnection and Exchange Agreement

After the enforceability date, water delivered to Reservation or trust lands must be by exchange or another legal arrangement

Water delivered to the Nation under these arrangements does not count against the Town's water budget

## WATER DELIVERED TO CAMP VERDE BY THE NATION

The agreement anticipates circumstances, including emergencies, where the Nation may deliver potable water to the Town

Water delivered by the Nation for use in the Town Water Service Area does count against the Town's water budget

The Nation must provide enough reporting information for the Town to account for that water properly

# SEWER SERVICE & HIGHWAY 260 AREA



---

The Town and Nation will continue serving their existing sewer service areas

---

Neither party may collect wastewater from customers in the other's existing service area without written agreement

---

The agreement establishes a Highway 260 Joint Sewer Service Area

---

Future sewer infrastructure in that area is intended to be jointly planned, funded, and developed

---

Emphasis is placed on maximizing wastewater collection, treatment, and reuse of effluent

# FOREST SERVICE LAND TRANSFER SUPPORT

- The Nation agrees to support the Town's effort to acquire up to 40 acres of U.S. Forest Service land
- Location: I-17 / General Crook Trail intersection
- Intended use: public safety and municipal complex
- The Nation agrees to coordinate with the Town and other agencies in support of this effort



# KEY TAKEAWAYS FOR CAMP VERDE



The agreement provides water certainty and legal protection



It establishes a clear 7,752 AFY water budget



It preserves important future water supply options



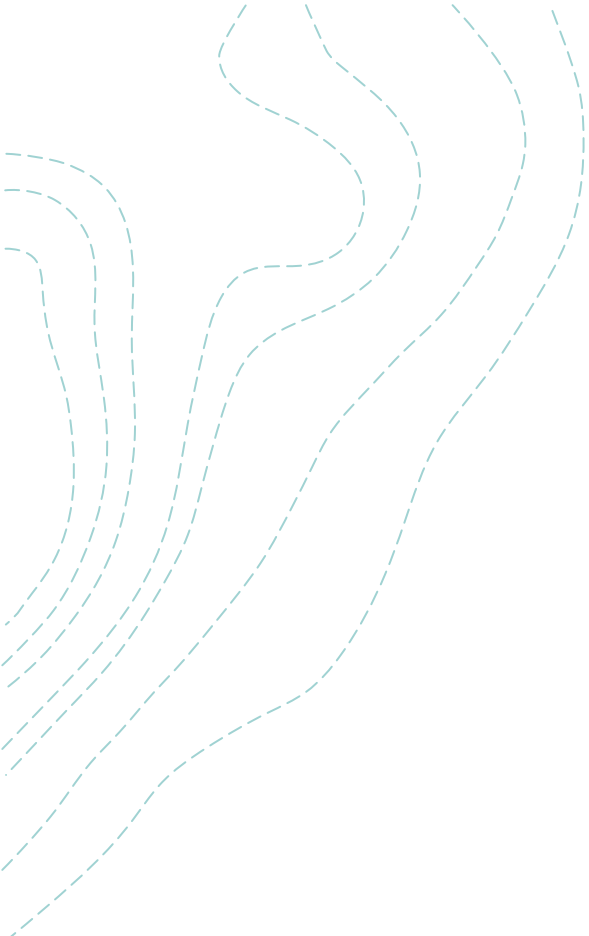
It requires strong accounting, metering, and reporting



It creates a framework for joint infrastructure planning with the Nation



It supports long-term growth, resiliency, and collaboration



THANK YOU

